

Intro to Barry-Wehmiller for Mechanical Engineering and Metalworking Business Forum



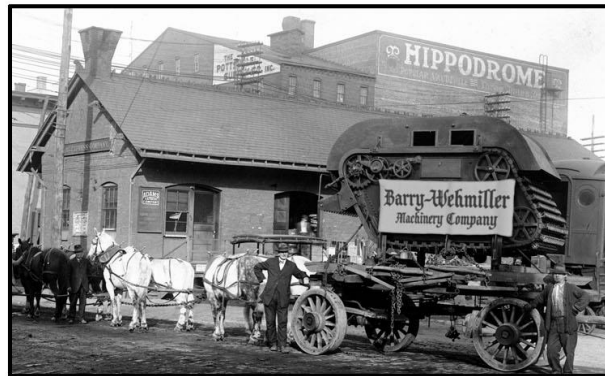
Barry-Wehmiller History at a Glance

- **Founded in 1885 in St. Louis, Missouri, USA**
- **Developed the first continuous motion pasteurizer**
- **Very limited client base**
- **Served breweries**
- **Equipment manufacturing in St. Louis**
- **Less than 100 team members in 1980s**

135 Years

Thomas J. Barry opened a machine shop in south St. Louis to provide conveying and transportation equipment to area malt houses. He was joined later by his brother-in-law, **Alfred Wehmiller**, to form the Barry-Wehmiller Machinery Company. As the business grew, the two men expanded their product lines with a machine to quickly soak and wash refillable bottles.

Ownership passed from the Wehmiller family to the Chapman family in 1963. **Bob Chapman** joined Barry-Wehmiller in 1970 and succeeded his father as Chairman and CEO in 1975. In 2020, **Kyle Chapman** now succeeds his father and was named president of Barry-Wehmiller Group.



barrywehmler

Global supplier of engineering consulting and manufacturing technology for the packaging, corrugating, sheeting and paper-converting industries, with a private investment arm targeting the capital and component equipment, and professional services sectors.

12,000+

Team Members

200+

Locations
Worldwide in

26

Countries

Empowered Team Members



Main Markets

Food & Beverage | Health Care
Corrugated/Folding Carton
Consumer



Lifetime Customer Support



\$3.0

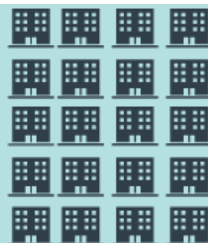
Billion
Global Firm



Inspirational Leadership



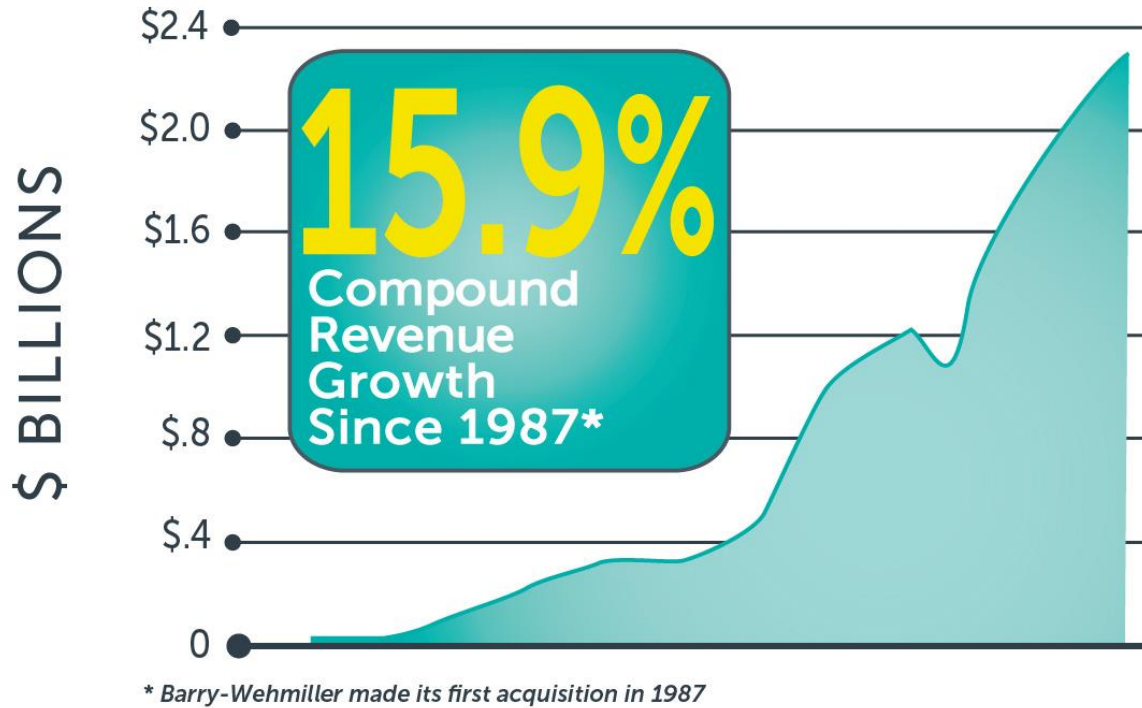
Unique Blend
of
110+
Companies



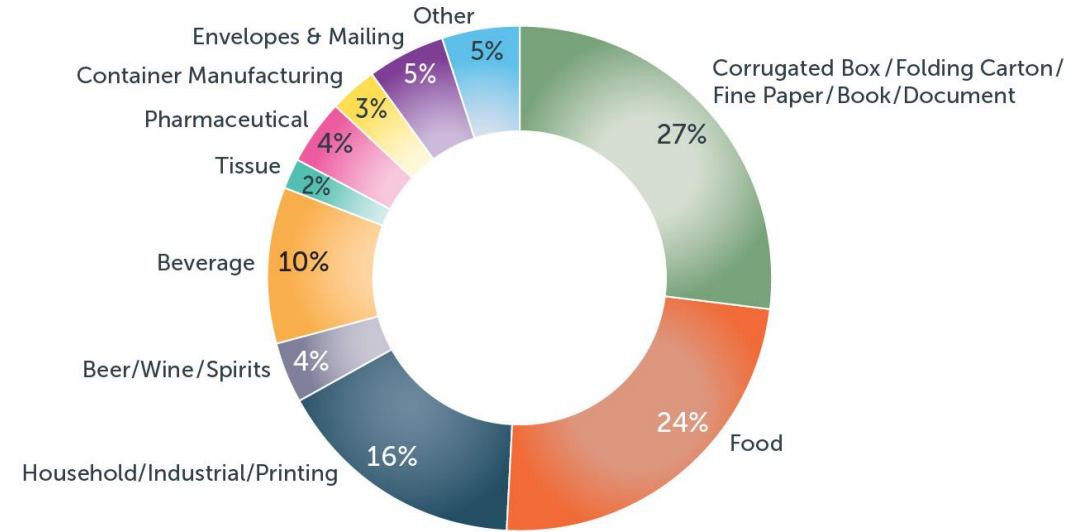
Stewardship of Customers' Trust

We measure success by the way we touch the lives of people.

Barry-Wehmiller Growth



Markets Served (% of Turnover)



* Excludes BW Forsyth Partners

Companies

Barry-Wehmiller Companies



A leader in the design, manufacture & support of automated label & shrink sleeve application systems, as well as converting & finishing equipment, for the shrink sleeve label & flexible-packaging markets.



A key producer of automated corrugated-box-manufacturing machines.



A leading global manufacturer of packaging systems that include form-fill-seal, feeding, bag filling & sealing, pouch-making equipment, flow-wrap, reclosable packaging solutions, palletizing, stretch-wrapping & more.



An industry leader in the design & manufacture of end-of-line packaging equipment solutions & packaging automation, as well as systems integration.



A leading solutions provider of equipment & services for the corrugating & finishing, sheeting & packaging, & stationery, book-binding & security-documents industries.



A premier supplier of manufacturing automation & control systems, facility design, process engineering, construction management, regulatory compliance, & other engineering & IT consulting services.



An innovative provider of high-performance converting machinery for the tissue, nonwovens & package-printing industries.



A global provider of filling, capping, can seaming, labeling, centrifugation, orienters & wet-case detectors.



A form-fill-seal & fill-seal technologies leader that designs & manufactures state-of-the-art integrated lines for single-portion, ultra-clean packaging of milk products & desserts.



A leading global technology & system-solutions partner offering a wide range of highly efficient, integrated solutions for the mail & postal industry, as well as for the tissue & hygiene industry.

BW Forsyth Partners Companies



An innovative global leader in delivering high-performance production technologies, equipment, services & supplies for precast concrete manufacturers.



A leading international manufacturer & supplier of innovative process-automation equipment, parts, service & consumables for the printing, packaging, textile, plastic film extrusion & corrugated industries.



A platform of three core companies—Eberl Claims Service, Engle Martin & Associates, & Envista Forensics—serving the insurance, risk management & legal communities.



A premier provider of advanced equipment & services for the medical device, biopharmaceutical, & blood- & plasma-collection industries.



BW Papersystems

Providing capital equipment & technology solutions




Corrugators
 Flexo Folder Gluers
 Folio & Cut-Size Sheeters
 Ream Wrappers
 Passport Machines
 Exercise book machines
 Spiral Binding Machines
 Book-On-Demand
 Platen & Rotary Die Cutters


500+
 Million
 Global firm




Inspired People
Lasting Commitment
Superior Solutions

10 Global
 Manufacturing
 Plants



Phillips, WI, USA
 Sheboygan, WI, USA
 New Berlin, WI, USA
 Hamburg, Germany
 Stuttgart, Germany



Phillips, WI, USA
 Baltimore, MD, USA
 Budapest, Hungary
 Milan, Italy
 Dongguan, China
 Taoyuan, Taiwan

16 Brands Combined over 16 years
 Marquip • Ward • United • VortX • Curioni •
 Apollo • E.C.H. Will • Pemco • SHM •
 Wrapmatic • Bielomatik Paper Processing •
 Kugler-Womako • JAG Synchro • Zerand •
 Questec • K&H

